



*ONLY*

**R11**<sup>TM</sup>

**ACTIVATE DISTANCE.**

# R11™ DRIVER



ONLY R11 CAN ACTIVATE THE  
THREE DIMENSIONS TO DISTANCE

## THE 3 DIMENSIONS OF DISTANCE

### DIMENSION 1 LOFT

INCREASE OR DECREASE LAUNCH  
ANGLE TO GET MORE DISTANCE.

### DIMENSION 2 FACE ANGLE

SELECT AN OPEN, CLOSED OR  
NEUTRAL ADDRESS - SETTING  
FOR MORE DISTANCE.

### DIMENSION 3 FLIGHT PATH

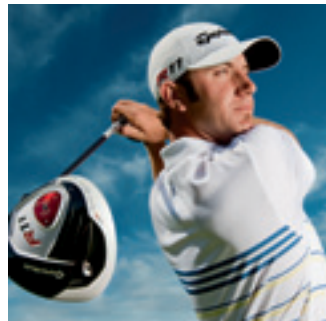
PROMOTE A FADE - HEAVIER  
WEIGHT IN THE TOE, LIGHTER WEIGHT  
IN THE HEEL FOR MORE DISTANCE

PROMOTE A DRAW - LIGHTER  
WEIGHT IN THE TOE, HEAVIER WEIGHT  
IN THE HEEL FOR MORE DISTANCE



## R11™

- ▶ Adjust the loft with Flight Control Technology (FCT)
- ▶ Adjust the face angle with the new Adjustable Sole Plate (ASP)
- ▶ Adjust the CG location with Movable Weight Technology™ (MWT®)
- ▶ Promotes up to 100 yards of side-to-side trajectory change and ±500 RPM backspin change
- ▶ New aerodynamic shape promotes faster speed for more distance
- ▶ White non-glare crown and black clubface for easy alignment



"I've never been so dialed in on the tee box. The fitting was quick and simple: three steps and the R11 was totally customized to my swing. I can't wait to bring this driver out on Tour."

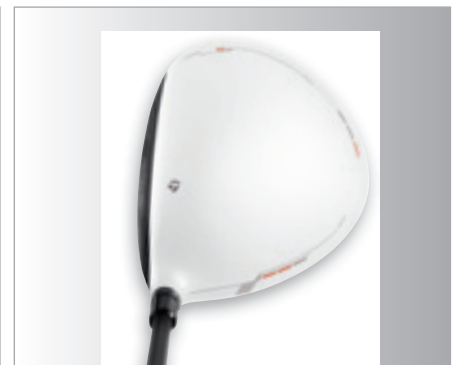
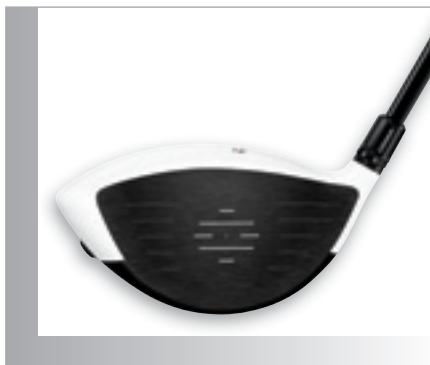
**DUSTIN JOHNSON**  
PGA TOUR PROFESSIONAL

### GRIP:

TaylorMade 360 - 55g

### SHAFT:

Fujikura® Blur® 60 - X, S, R, M  
Fujikura® Blur® TP 65 - X, S, R



CLUB / LOFT	HAND	LIE	VOLUME	LENGTH	SWING WEIGHT
9.0°	R/L	60°	440cc	45.75"	D4
10.5°	R/L	60°	440cc	45.75"	D4

CUSTOM OPTIONS AVAILABLE



TP AVAILABLE - TP HEAD SPECS SAME AS STANDARD - TP LENGTH VARIES DEPENDING ON SHAFT